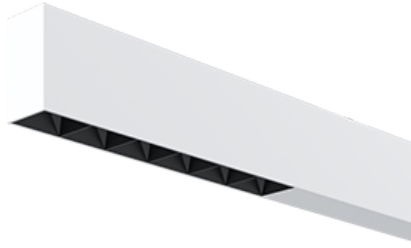


NEMAN X - SURFACE CONTINUOUS



Neman-X S STA PW X3-05 D30 935 L500 DALI

Start module for continuous line system

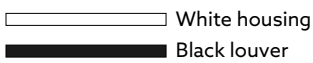
Product code: NMX S STA PW X3-05 B D30 935 0500 D

Article No.: F5SBDCPBBBF0500D

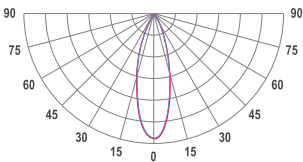
see drawings below for real representation



COLORS



PHOTOMETRICS

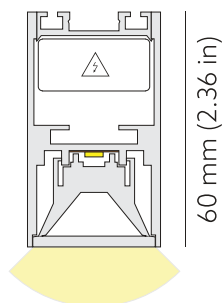


SEGMENT TYPE LAYOUT



Start module

TECHNICAL DRAWING



34 mm (1.34 in)

MOUNTING

Surface type

SPECTRUM

3500K
CRI 90+
3-Step MacAdam

OPTICS

30°

LUMINOUS FLUX*

Luminaire: 830 Lm
Light source: 954 Lm

EFFICACY

Luminaire: 79 Lm/W
Light source: 91 Lm/W

LIFETIME

L90B10 60.000h

DIMMING

DALI, PushDim

HOUSING

Aluminum, plastic

ELECTRICAL

Luminaire power: 10.5 W
220-240 VAC 50/60 Hz
Integrated driver

OTHER DETAILS

IP40 ingress protection

DIMENSIONS

Width: 34 mm / 1.34"
Height: 60 mm / 2.36"
Length: 501.5 mm / 1.6'
Distance between groups: 50 cm
Black-out length: 409 mm / 1.34'

LEDS LAYOUT



* Luminous flux values are based on tests with white housing. Lower luminous flux values might apply for other housing colors.