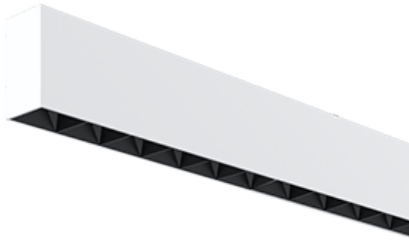


# NEMAN X - SURFACE



## Neman-X S LUM PW X1 B D30 935 DALI

Individual luminaire

Product code: NMX S LUM PW X1 B D30 935 D

Article No.: F3SADABBBFD

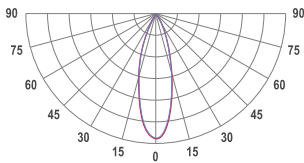
see drawings below for real representation



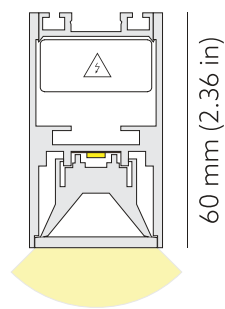
### COLORS



### PHOTOMETRICS



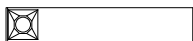
### TECHNICAL DRAWING



34 mm (1.34 in)

MOUNTING	Surface type
SPECTRUM	3500K CRI 90+ 3-Step MacAdam
OPTICS	30°
LUMINOUS FLUX*	Luminaire: 123 Lm Light source: 168 Lm
EFFICACY	Luminaire: 77 Lm/W Light source: 105 Lm/W
LIFETIME	L90B10 60.000h
DIMMING	DALI, PushDim
HOUSING	Aluminum, plastic
ELECTRICAL	Luminaire power: 1.6 W 220-240 VAC 50/60 Hz Integrated driver
OTHER DETAILS	IP40 ingress protection
DIMENSIONS	Width: 34 mm / 1.34" Height: 60 mm / 2.36" Length: 186 mm / 0.61'

### LEDS LAYOUT



\* Luminous flux values are based on tests with white housing. Lower luminous flux values might apply for other housing colors.

Possible allowed deviation of optical and electrical values are  $\pm 15\%$ . Allowed measurement uncertainty  $\pm 7\%$ . All values in datasheet are for reference only and customers should take these values on their own risk. HOLECTRON reserves the right for changes without prior notice.