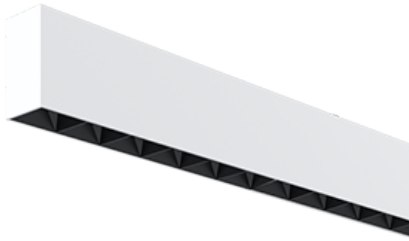


NEMAN X - SURFACE



Neman-X S LUM PW X1 B D30 930 DALI

Individual luminaire

Product code: NMX S LUM PW X1 B D30 930 D

Article No.: F3SADABBED

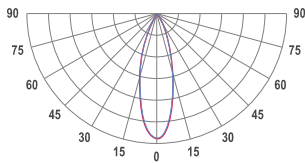
see drawings below for real representation



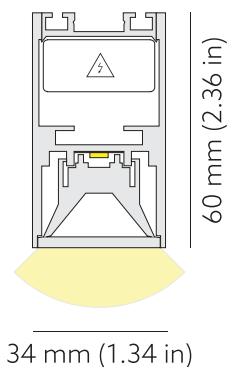
COLORS



PHOTOMETRICS

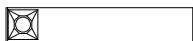


TECHNICAL DRAWING



MOUNTING	Surface type
SPECTRUM	3000K CRI 90+ 3-Step MacAdam
OPTICS	30°
LUMINOUS FLUX*	Luminaire: 118 Lm Light source: 162 Lm
EFFICACY	Luminaire: 74 Lm/W Light source: 101 Lm/W
LIFETIME	L90B10 60.000h
DIMMING	DALI, PushDim
HOUSING	Aluminum, plastic
ELECTRICAL	Luminaire power: 1.6 W 220-240 VAC 50/60 Hz Integrated driver
OTHER DETAILS	IP40 ingress protection
DIMENSIONS	Width: 34 mm / 1.34" Height: 60 mm / 2.36" Length: 186 mm / 0.61'

LEDS LAYOUT



* Luminous flux values are based on tests with white housing. Lower luminous flux values might apply for other housing colors.

Possible allowed deviation of optical and electrical values are $\pm 15\%$. Allowed measurement uncertainty $\pm 7\%$. All values in datasheet are for reference only and customers should take these values on their own risk. HOLECTRON reserves the right for changes without prior notice.