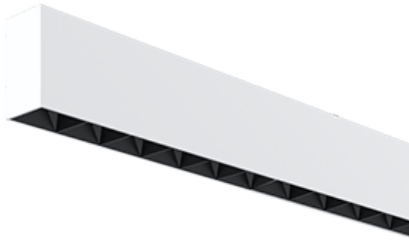


# NEMAN X - SURFACE



## Neman-X S LUM PW X1 B D30 927 DALI

Individual luminaire

Product code: NMX S LUM PW X1 B D30 927 D

Article No.: F3SADABBBDD

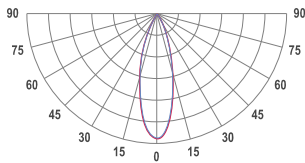
see drawings below for real representation



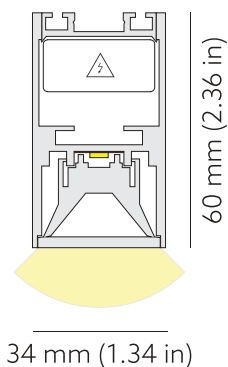
### COLORS



### PHOTOMETRICS



### TECHNICAL DRAWING



### MOUNTING

Surface type

### SPECTRUM

2700K  
CRI 90+  
3-Step MacAdam

### OPTICS

30°

### LUMINOUS FLUX\*

Luminaire: 115 Lm  
Light source: 157 Lm

### EFFICACY

Luminaire: 72 Lm/W  
Light source: 98 Lm/W

### LIFETIME

L90B10 60.000h

### DIMMING

DALI, PushDim

### HOUSING

Aluminum, plastic

### ELECTRICAL

Luminaire power: 1.6 W  
220-240 VAC 50/60 Hz  
Integrated driver

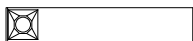
### OTHER DETAILS

IP40 ingress protection

### DIMENSIONS

Width: 34 mm / 1.34"  
Height: 60 mm / 2.36"  
Length: 186 mm / 0.61'

### LEDS LAYOUT



\* Luminous flux values are based on tests with white housing. Lower luminous flux values might apply for other housing colors.

Possible allowed deviation of optical and electrical values are  $\pm 15\%$ . Allowed measurement uncertainty  $\pm 7\%$ .  
All values in datasheet are for reference only and customers should take these values on their own risk. HOLECTRON reserves the right for changes without prior notice.