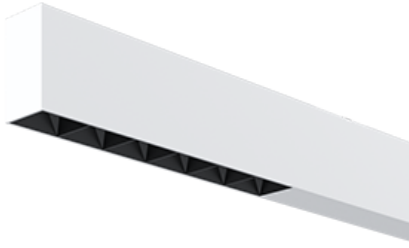


NEMAN X - SURFACE CONTINUOUS



Neman-X S STA PW X3-05 D30 927 L3000 ND

Start module for continuous line system

Product code: NMX S STA PW X3-05 B D30 927 3000 N

Article No.: F5BDCPBBD3000N

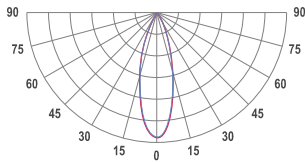
see drawings below for real representation



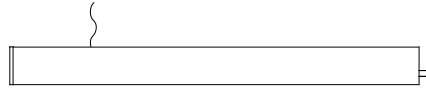
COLORS



PHOTOMETRICS

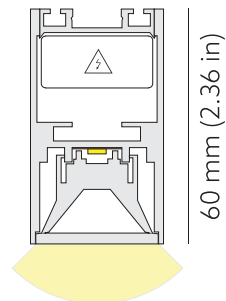


SEGMENT TYPE LAYOUT



Start module

TECHNICAL DRAWING



34 mm (1.34 in)

MOUNTING

Surface type

SPECTRUM

2700K
CRI 90+
3-Step MacAdam

OPTICS

30°

LUMINOUS FLUX*

Luminaire: 4667 Lm
Light source: 5364 Lm

EFFICACY

Luminaire: 74 Lm/W
Light source: 85 Lm/W

LIFETIME

L90B10 60.000h

DIMMING

not dimmable

HOUSING

Aluminum, plastic

ELECTRICAL

Luminaire power: 63 W
220-240 VAC 50/60 Hz
Integrated driver

OTHER DETAILS

IP40 ingress protection

DIMENSIONS

Width: 34 mm / 1.34"
Height: 60 mm / 2.36"
Length: 3001.5 mm / 9.8'
Distance between groups: 50 cm
Black-out length: 485 mm / 1.59'

LEDS LAYOUT



* Luminous flux values are based on tests with white housing. Lower luminous flux values might apply for other housing colors.

Possible allowed deviation of optical and electrical values are $\pm 15\%$. Allowed measurement uncertainty $\pm 7\%$.
All values in datasheet are for reference only and customers should take these values on their own risk. HOLECTRON reserves the right for changes without prior notice.