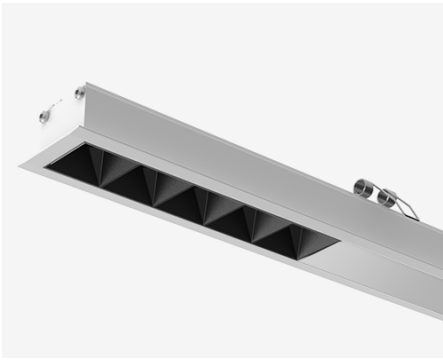


# NEMAN X - RECESSED



## Neman-X R LUM PW X1 B D30 935 ND

Individual luminaire

Product code: NMX R LUM PW X1 B D30 935 N

Article No.: F3RADABBBFN

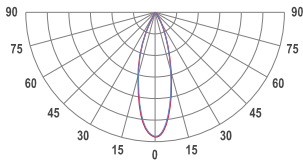
see drawings below for real representation



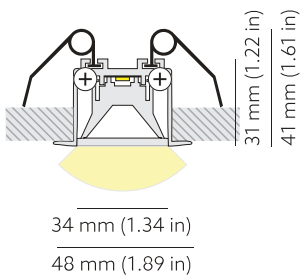
### COLORS



### PHOTOMETRICS



### TECHNICAL DRAWING



<b>MOUNTING</b>	Recessed type
<b>SPECTRUM</b>	3500K CRI 90+ 3-Step MacAdam
<b>OPTICS</b>	30°
<b>LUMINOUS FLUX*</b>	Luminaire: 146 Lm Light source: 168 Lm
<b>EFFICACY</b>	Luminaire: 91 Lm/W Light source: 105 Lm/W
<b>LIFETIME</b>	L90B10 60.000h
<b>DIMMING</b>	not dimmable
<b>HOUSING</b>	Aluminum, plastic
<b>ELECTRICAL</b>	Luminaire power: 1.6 W 220-240 VAC 50/60 Hz External driver included
<b>OTHER DETAILS</b>	IP40 ingress protection
<b>DIMENSIONS</b>	Width: 48mm / 1.9" Height: 41mm / 1.61" Length: 48 mm / 0.16'
<b>MOUNTING HOLE</b>	39 x 38 mm / 0.13' x 0.12'
<b>LEDS LAYOUT</b>	



\* Luminous flux values are based on tests with white housing. Lower luminous flux values might apply for other housing colors.

Possible allowed deviation of optical and electrical values are ±15%. Allowed measurement uncertainty ±7%. All values in datasheet are for reference only and customers should take these values on their own risk. HOLECTRON reserves the right for changes without prior notice.