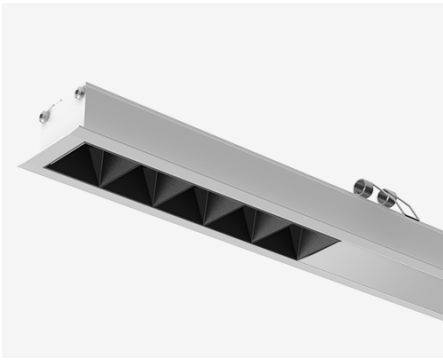


NEMAN X - RECESSED



Neman-X R LUM PW X1 B D30 930 DALI

Individual luminaire

Product code: NMX R LUM PW X1 B D30 930 D

Article No.: F3RADABBED

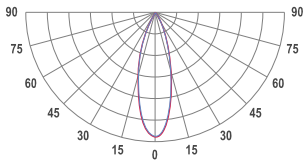
see drawings below for real representation



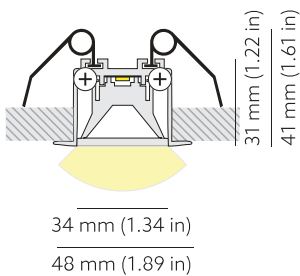
COLORS



PHOTOMETRICS



TECHNICAL DRAWING



MOUNTING	Recessed type
SPECTRUM	3000K CRI 90+ 3-Step MacAdam
OPTICS	30°
LUMINOUS FLUX*	Luminaire: 141 Lm Light source: 162 Lm
EFFICACY	Luminaire: 88 Lm/W Light source: 101 Lm/W
LIFETIME	L90B10 60.000h
DIMMING	DALI, PushDim
HOUSING	Aluminum, plastic
ELECTRICAL	Luminaire power: 1.6 W 220-240 VAC 50/60 Hz External driver included
OTHER DETAILS	IP40 ingress protection
DIMENSIONS	Width: 48mm / 1.9" Height: 41mm / 1.61" Length: 48 mm / 0.16'
MOUNTING HOLE	39 x 38 mm / 0.13' x 0.12'
LEDS LAYOUT	



* Luminous flux values are based on tests with white housing. Lower luminous flux values might apply for other housing colors.

Possible allowed deviation of optical and electrical values are ±15%. Allowed measurement uncertainty ±7%.
All values in datasheet are for reference only and customers should take these values on their own risk. HOLECTRON reserves the right for changes without prior notice.