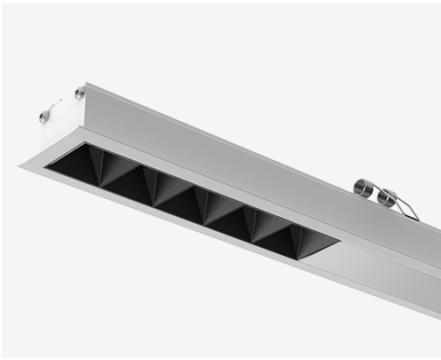


# NEMAN X - RECESSED



see drawings below for real representation



## COLORS

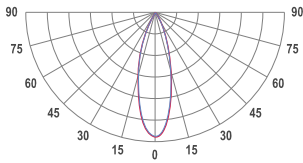


White housing

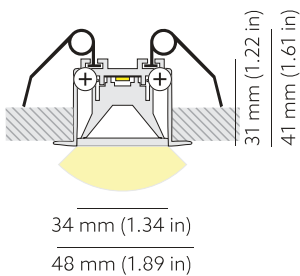


Black louver

## PHOTOMETRICS



## TECHNICAL DRAWING



## Neman-X R LUM PW X1 B D30 927 DALI

Individual luminaire

Product code: NMX R LUM PW X1 B D30 927 D

Article No.: F3RADABBBDD

### MOUNTING

Recessed type

### SPECTRUM

2700K  
CRI 90+  
3-Step MacAdam

### OPTICS

30°

### LUMINOUS FLUX\*

Luminaire: 137 Lm  
Light source: 157 Lm

### EFFICACY

Luminaire: 86 Lm/W  
Light source: 98 Lm/W

### LIFETIME

L90B10 60.000h

### DIMMING

DALI, PushDim

### HOUSING

Aluminum, plastic

### ELECTRICAL

Luminaire power: 1.6 W  
220-240 VAC 50/60 Hz  
External driver included

### OTHER DETAILS

IP40 ingress protection

### DIMENSIONS

Width: 48mm / 1.9"  
Height: 41mm / 1.61"  
Length: 48 mm / 0.16'

### MOUNTING HOLE

39 x 38 mm / 0.13' x 0.12'

### LEDS LAYOUT



\* Luminous flux values are based on tests with white housing. Lower luminous flux values might apply for other housing colors.

Possible allowed deviation of optical and electrical values are  $\pm 15\%$ . Allowed measurement uncertainty  $\pm 7\%$ .  
All values in datasheet are for reference only and customers should take these values on their own risk. HOLECTRON reserves the right for changes without prior notice.