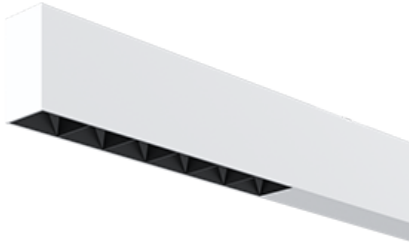


# NEMAN X - SURFACE CONTINUOUS



## Neman-X S STA PW X3-05 D30 927 L3000 ND

Start module for continuous line system

Product code: NMX S STA PW X3-05 B D30 927 3000 N

Article No.: F5BDCPBBD3000N

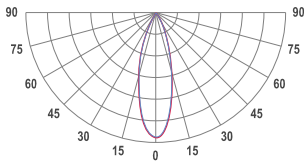
see drawings below for real representation



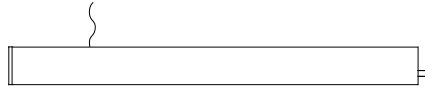
### COLORS



### PHOTOMETRICS

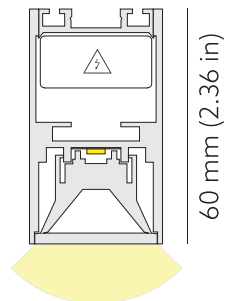


### SEGMENT TYPE LAYOUT



Start module

### TECHNICAL DRAWING



34 mm (1.34 in)

### MOUNTING

Surface type

### SPECTRUM

2700K  
CRI 90+  
3-Step MacAdam

### OPTICS

30°

### LUMINOUS FLUX\*

Luminaire: 4667 Lm  
Light source: 5364 Lm

### EFFICACY

Luminaire: 74 Lm/W  
Light source: 85 Lm/W

### LIFETIME

L90B10 60.000h

### DIMMING

not dimmable

### HOUSING

Aluminum, plastic

### ELECTRICAL

Luminaire power: 63 W  
220-240 VAC 50/60 Hz  
Integrated driver

### OTHER DETAILS

IP40 ingress protection

### DIMENSIONS

Width: 34 mm / 1.34"  
Height: 60 mm / 2.36"  
Length: 3001.5 mm / 9.8'  
Distance between groups: 50 cm  
Black-out length: 485 mm / 1.59'

### LEDS LAYOUT



\* Luminous flux values are based on tests with white housing. Lower luminous flux values might apply for other housing colors.

Possible allowed deviation of optical and electrical values are  $\pm 15\%$ . Allowed measurement uncertainty  $\pm 7\%$ . All values in datasheet are for reference only and customers should take these values on their own risk. HOLECTRON reserves the right for changes without prior notice.