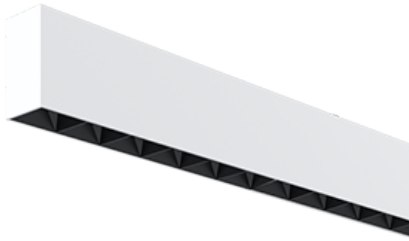


NEMAN X - SURFACE



Neman-X S LUM PW X1 B D30 930 DALI

Individual luminaire

Product code: NMX S LUM PW X1 B D30 930 D

Article No.: F3SADABBED

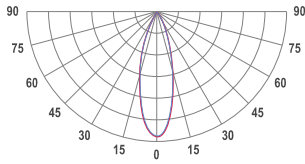
see drawings below for real representation



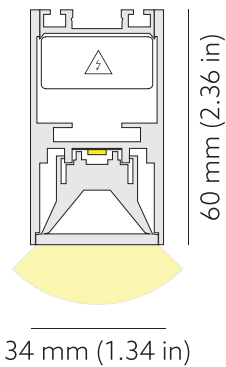
COLORS



PHOTOMETRICS



TECHNICAL DRAWING



MOUNTING

Surface type

SPECTRUM

3000K
CRI 90+
3-Step MacAdam

OPTICS

30°

LUMINOUS FLUX*

Luminaire: 118 Lm
Light source: 162 Lm

EFFICACY

Luminaire: 74 Lm/W
Light source: 101 Lm/W

LIFETIME

L90B10 60.000h

DIMMING

DALI, PushDim

HOUSING

Aluminum, plastic

ELECTRICAL

Luminaire power: 1.6 W
220-240 VAC 50/60 Hz
Integrated driver

OTHER DETAILS

IP40 ingress protection

DIMENSIONS

Width: 34 mm / 1.34"
Height: 60 mm / 2.36"
Length: 186 mm / 0.61'

LEDS LAYOUT



* Luminous flux values are based on tests with white housing. Lower luminous flux values might apply for other housing colors.

Possible allowed deviation of optical and electrical values are $\pm 15\%$. Allowed measurement uncertainty $\pm 7\%$. All values in datasheet are for reference only and customers should take these values on their own risk. HOLECTRON reserves the right for changes without prior notice.