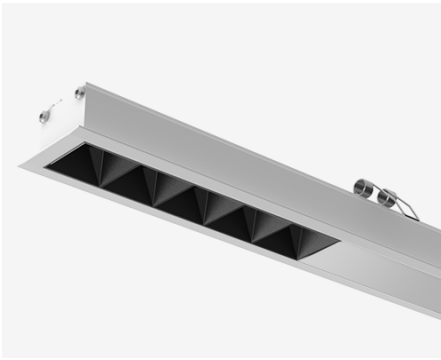


# NEMAN X - RECESSED CONTINUOUS



## Neman-X R STA PW X3-05 D30 927 L2000 DALI

Start module for continuous line system

Product code: NMX R STA PW X3-05 B D30 927 2000 D

Article No.: F5RBDCPBBD2000D

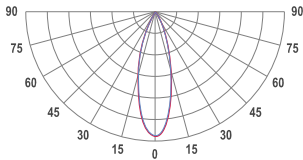
see drawings below for real representation



### COLORS



### PHOTOMETRICS

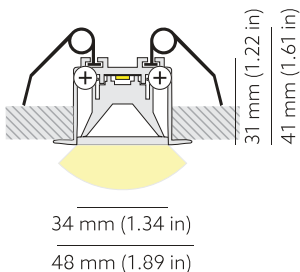


### SEGMENT TYPE LAYOUT



Start module

### TECHNICAL DRAWING



MOUNTING	Recessed type
SPECTRUM	2700K CRI 90+ 3-Step MacAdam
OPTICS	30°
LUMINOUS FLUX*	Luminaire: 3111 Lm Light source: 3576 Lm
EFFICACY	Luminaire: 74 Lm/W Light source: 85 Lm/W
LIFETIME	L90B10 60.000h
DIMMING	DALI, PushDim
HOUSING	Aluminum, plastic
ELECTRICAL	Luminaire power: 42 W 220-240 VAC 50/60 Hz External driver included
OTHER DETAILS	IP40 ingress protection
DIMENSIONS	Width: 48 mm / 1.89" Height: 31 mm / 1.22" Length: 2008.5 mm / 6.6' Distance between groups: 50 cm Black-out length: 477.125 mm / 1.57'
MOUNTING HOLE	2004 x 38 mm / 6.57' x 0.12"

### LEDS LAYOUT



\* Luminous flux values are based on tests with white housing. Lower luminous flux values might apply for other housing colors.

Possible allowed deviation of optical and electrical values are ±15%. Allowed measurement uncertainty ±7%. All values in datasheet are for reference only and customers should take these values on their own risk. HOLECTRON reserves the right for changes without prior notice.