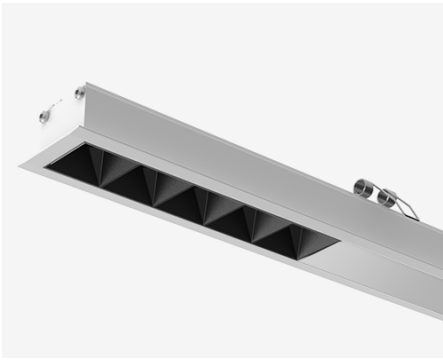


NEMAN X - RECESSED CONTINUOUS



Neman-X R STA PW X3-05 D30 927 L1000 DALI

Start module for continuous line system

Product code: NMX R STA PW X3-05 B D30 927 1000 D

Article No.: F5RBDCPBBD1000D

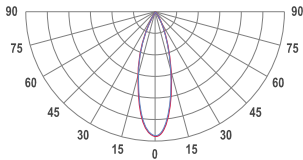
see drawings below for real representation



COLORS



PHOTOMETRICS

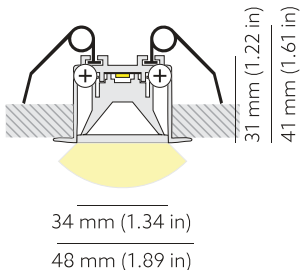


SEGMENT TYPE LAYOUT



Start module

TECHNICAL DRAWING



MOUNTING	Recessed type
SPECTRUM	2700K CRI 90+ 3-Step MacAdam
OPTICS	30°
LUMINOUS FLUX*	Luminaire: 1556 Lm Light source: 1788 Lm
EFFICACY	Luminaire: 74 Lm/W Light source: 85 Lm/W
LIFETIME	L90B10 60.000h
DIMMING	DALI, PushDim
HOUSING	Aluminum, plastic
ELECTRICAL	Luminaire power: 21 W 220-240 VAC 50/60 Hz External driver included
OTHER DETAILS	IP40 ingress protection
DIMENSIONS	Width: 48 mm / 1.89" Height: 31 mm / 1.22" Length: 1008.5 mm / 3.3' Distance between groups: 50 cm Black-out length: 454.25 mm / 1.49'
MOUNTING HOLE	1004 x 38 mm / 3.29' x 0.12"

LEDS LAYOUT



* Luminous flux values are based on tests with white housing. Lower luminous flux values might apply for other housing colors.

Possible allowed deviation of optical and electrical values are ±15%. Allowed measurement uncertainty ±7%. All values in datasheet are for reference only and customers should take these values on their own risk. HOLECTRON reserves the right for changes without prior notice.