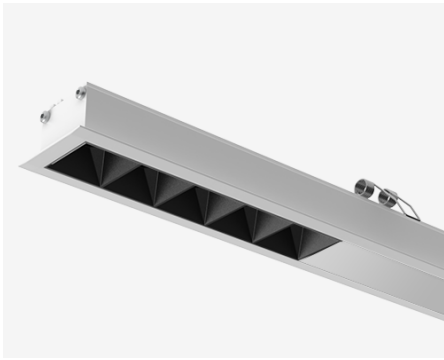


# NEMAN X - RECESSED CONTINUOUS



## Neman-X R STA PW X3-05 D30 927 L500 DALI

Start module for continuous line system

Product code: NMX R STA PW X3-05 B D30 927 0500 D

Article No.: F5RBDCPBBD0500D

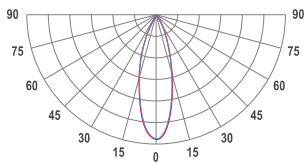
see drawings below for real representation



### COLORS



### PHOTOMETRICS

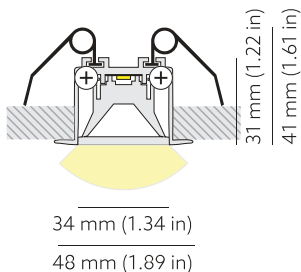


### SEGMENT TYPE LAYOUT



Start module

### TECHNICAL DRAWING



<b>MOUNTING</b>	Recessed type
<b>SPECTRUM</b>	2700K CRI 90+ 3-Step MacAdam
<b>OPTICS</b>	30°
<b>LUMINOUS FLUX*</b>	Luminaire: 778 Lm Light source: 894 Lm
<b>EFFICACY</b>	Luminaire: 74 Lm/W Light source: 85 Lm/W
<b>LIFETIME</b>	L90B10 60.000h
<b>DIMMING</b>	DALI, PushDim
<b>HOUSING</b>	Aluminum, plastic
<b>ELECTRICAL</b>	Luminaire power: 10.5 W 220-240 VAC 50/60 Hz External driver included
<b>OTHER DETAILS</b>	IP40 ingress protection
<b>DIMENSIONS</b>	Width: 48 mm / 1.89" Height: 31 mm / 1.22" Length: 508.5 mm / 1.7' Distance between groups: 50 cm Black-out length: 408.5 mm / 1.34'
<b>MOUNTING HOLE</b>	504 x 38 mm / 1.65' x 0.12"

### LEDS LAYOUT



\* Luminous flux values are based on tests with white housing. Lower luminous flux values might apply for other housing colors.

Possible allowed deviation of optical and electrical values are ±15%. Allowed measurement uncertainty ±7%. All values in datasheet are for reference only and customers should take these values on their own risk. HOLECTRON reserves the right for changes without prior notice.